



# U8 Recreational Rules

**Playing Time:** Two 25 Minute Halves

**Number of Players:** 7 v 7

Including Goalkeepers (No Punting)

Minimum: 5 Players

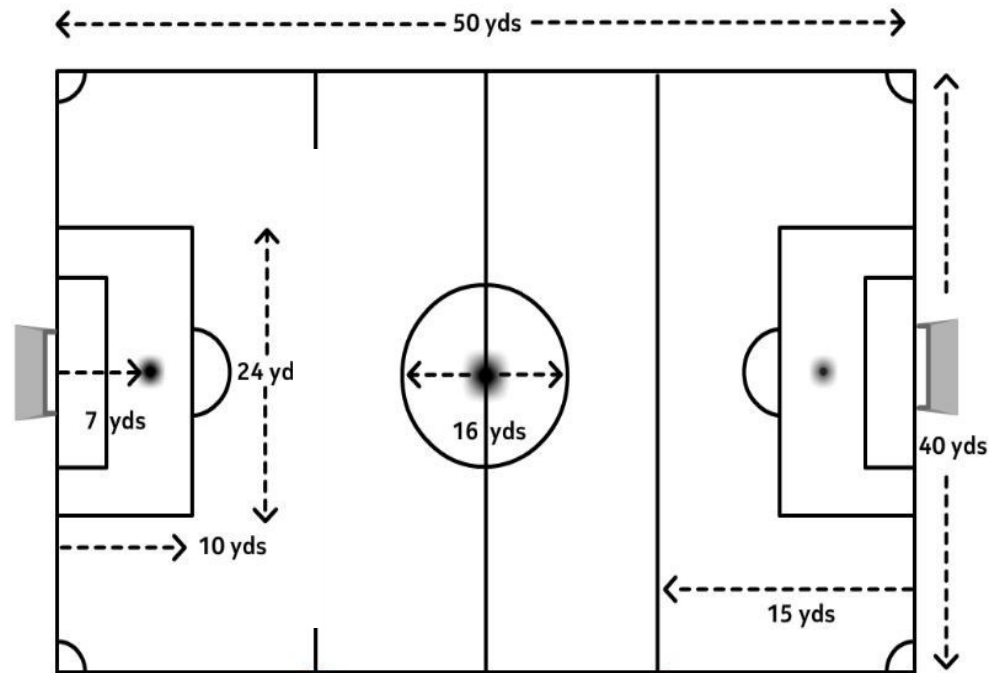
**Ball Size:** 4

**Field Dimensions:** 50 yards x 40 yards

**Throw—Ins:** Yes

**Heading:** Not Allowed (Per USSF Mandate)

**Team Areas :** Between the fields, on the opposite side from the spectators



## The Field

- **Dimensions:** The field will be approximately 50 yards long and 40 yards wide, with a center circle with an 8 yard radius.
- **Goals:** Goals will be 6 ft high and 8 ft wide.
- **Penalty Area:** extends 10 yards from the goal line, 10 yards from each goal post.
- **Build Out Lines:** No build-out lines used.

## The Ball

- A size 4 ball will be provided by the home team.

## Number of Players

- Recommended roster size per team is 12-14.
- Maximum number of players per team on the field at one time is 7, including the goalkeeper.
- Minimum number of players per team on the field to start or continue the game is 5. Coaches should loan players to a team that is short of the minimum in order to allow all children to play and have fun!
- Substitutions can be made on any stoppage.

## Duration of the Game / Playing Time

- Two equal halves of 25 minutes.
- Half-time must be five (5) minutes.
- Each player MUST play a minimum of 50% of the total playing time.
- Players can not play goalkeeper more than a half

## Ball In and Out of Play

- The ball is out of play when it has entirely crossed over the touchline.
- Play restarts with a throw-in for the other team. Opposing players must be 5 yards away.

## Method of Scoring

- The entire ball must travel over the goal line, inside of the goal.

## Players' Equipment

- **Uniforms:** All Players are required to wear the appropriate jerseys.
- The team listed first on the schedule shall be the home team.
- Players must not use equipment or wear anything dangerous to themselves or another player (No jewelry of any kind).
- **Shin guards:** Players must wear shin guards covered by long socks.
- **Footwear:** Soccer cleats are recommended, not required. No shoes with toe cleats (baseball cleats). No metal cleats.

## Starting The Game

- The Home team will kickoff the first half, Away team will kickoff the 2<sup>nd</sup> half.
- A kickoff occurs at the start of each half and after each goal. The opposing team must line up outside the center circle on their half of the field.
- After halftime, the teams change sides and the kickoff is taken by the team who did not take the kickoff at the start of the game.
- A goal cannot be scored directly from a kickoff. It must touch another player before going into the goal. If the ball is kicked directly into the goal, award a goal kick.
- Teams must sit on the opposite side from spectators, between the fields.

## Off side

- Offside will be called, per USSF mandate, if it is blatant.
- No offside directly from a throw-in.
- No offside directly from a goal kick.

## Fouls and Misconduct

- **No punting:** If a goalkeeper punts the ball the other team shall be awarded an indirect free kick on the build out line closest to offending goalkeeper's goal. Restart with an indirect kick.
- **No heading:** Per USSF mandate If a player intentionally heads the ball an indirect free kick will be awarded to the opposing team where the ball was headed. If this is inside their penalty area, award the kick at the top of the box.
- **Slide tackling:** While this is legal, coaches should encourage players to stay on their feet to tackle the ball from an opponent.

## Free Kicks

- Opponents must be 8 yards away from the ball.

## Goal Kick

- Awarded when the ball completely crosses the goal line and was last touched by an attacker.
- Taken from the top of the team's goal area.
- The ball must leave the penalty area to be in play.
- All opponents must be behind the build out line until the ball is in play.
- A goal may NOT be scored directly from a goal kick.

## Corner Kick

- Awarded when the ball has completely crossed the goal line, except through the goal, and was last played or touched by a player of the defending team, it shall be kicked into play from the corner of the field on the same side of the goal on which it went across the goal line by the attacking team.
- Opponents must be 8 yards away from the ball.

## Referees

- **2 referees will be provided by LOSC**
- **no coaches are allowed on the playing field during the game**